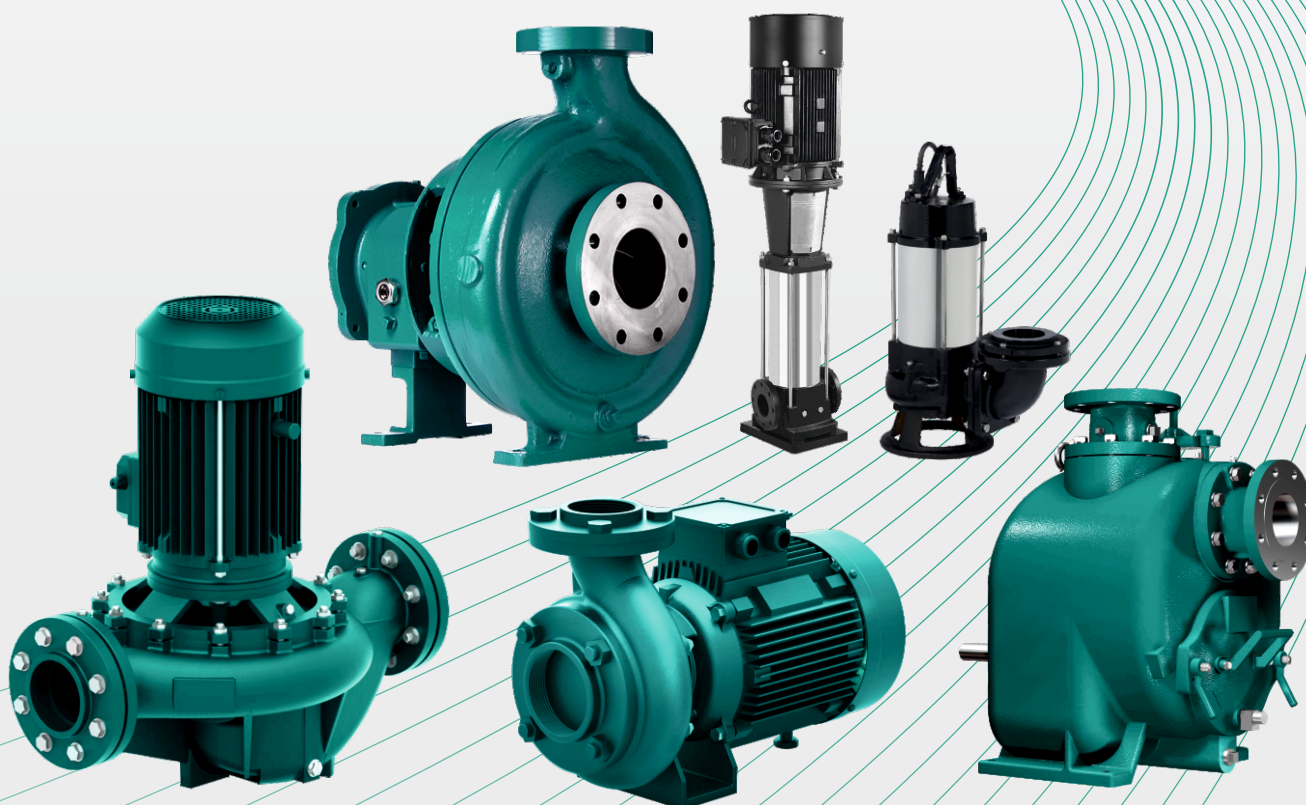




JEE PUMPS INC

PRODUCT Line Card



JEE Pumps Expands Global Footprint with New Sales Office and Assembly Unit in Canada

JEE Pumps INC, a leading manufacturer of industrial pumps, proudly announces the inauguration of its new sales office and assembly unit in Canada. This strategic expansion reinforces the company's commitment to providing exceptional service and support to its growing customer base in American market.

Strengthening Local Presence

The new facility, located in North America, will serve as a hub for sales, marketing, and customer support, enabling JEE Pumps to better cater to the unique needs of the American market. The assembly unit will enhance the company's ability to deliver customized pumping solutions, reducing lead times and increasing overall efficiency.

Key Benefits

- Enhanced customer support and service
- Local assembly and customization capabilities
- Reduced lead times and improved delivery
- Increased accessibility to JEE Pumps product portfolio
- Strengthened partnerships with American industries

Quote from Senior Management

"We are thrilled to establish a stronger presence in American Continent, a key market for JEE Pumps,"said Mr. Prakash Patel (Director).

This expansion demonstrates our dedication to providing top-notch products and services to our customers, and we look forward to fostering long-term relationships with businesses in American Continent.

A Journey of Excellence

At JEE Pumps, we've been setting the standard for excellence in the Pump industry since 1993. Our founder, Mr. Prakash Patel, established the company with a vision to deliver high-quality pumps that cater to various industrial sectors. Today, we boast three state-of-the-art manufacturing campuses equipped with cutting-edge technologies, enabling us to produce superior pumps with precision and scalability.

Unmatched Quality

Our products are renowned for their durability, finesse, and integrity, crafted with top-grade raw materials to withstand the toughest conditions. They efficiently handle a wide range of liquids, from low to high-temperature fluids, toxic liquids, and high-purity fluids.

Customization and Support

With over three decades of experience, we continually innovate and improve our products to exceed industry standards. Our products are highly customizable to meet the diverse needs of dynamic industries. Plus, our unwavering warranty and support ensure premium quality and world-class service for our clients.

Our Vision

To emerge as the premier flow partner across a broad spectrum of industrial segments, renowned for:

- Superior quality products that exceed expectations
- World-class services that delight our clients
- Optimal delivery times that ensure seamless operations

Our Mission

To become a self-sufficient and versatile company, catering to the diverse needs of the industry by:

- Delivering efficient products and services that excel across various applications
- Expanding our reach across a broad spectrum of market domains

OUR PHILOSOPHY



▶ Building Trust

We foster lifelong relationships with our customers by honouring our commitments and delivering on our promises.



▶ Propagating Sustainability

Our products and services are designed to contribute to a sustainable future, ensuring a better tomorrow for all.



▶ Innovating Continuously

We embrace cutting-edge technologies and advancements to enhance our products' efficiency, durability, and performance.

JAP SERIES

CENTRIFUGAL PROCESS PUMPS
(ANSI) IN INVESTMENT CASTING



Operating Data:

Capacity	: up to 7200 gpm (1635 m ³ /hr)
Head	: up to 900 ft (275 m)
Discharge Size	: 1 inch to 8 inch
Temperature	: up to 500°F (260°C)
Speed	: up to 3600 rpm
Pressure	: 30 bar
M.O.C.	: Ductile Iron, CF8M, SS316, CD4MCuN and Alloy 20 materials available

Advantages:

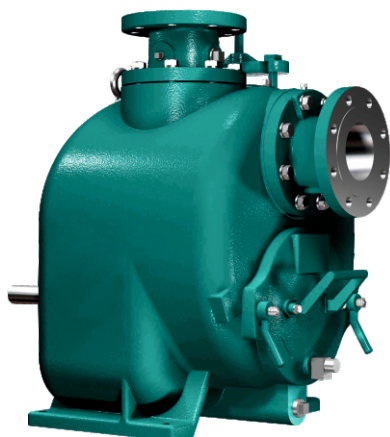
- Magnetic drain plug
- Extra-large capacity epoxy-coated oil sump
- Registered alignment between frame and adapter
- Standard and low-flow models available
- Heavy duty power frames
- Fully open impellers with rear-adjustment capability
- Wide variety of mechanical seal options
- Dynamically balanced impellers
- Factory certified, high quality genuine parts
- Part-for-part interchangeable with other centrifugal pumps

Applications:

- | | |
|--------------------|----------------------|
| • Oil & Gas | • Poultry Processing |
| • Chemical | • Automotive |
| • Petrochemical | • Pharmaceutical |
| • Water Treatment | • Steel |
| • Pulp & Paper | • Semiconductor |
| • Breweries | • Power Generation |
| • Grain processing | • Textile |
| • Food Processing | |

JSN SERIES

NON-CLOG SELF PRIMING TRASH PUMP



Key Features:

- **Self-Priming Non-Clogging:** Handles tough applications with ease
- **High Capacities:** Up to 3,400 GPM for efficient pumping
- **Hard Faced Mechanical Seals:** Standard feature for durability
- **Standard Spool Piece Flanges:** Easy installation and maintenance
- **Direct Drive or V-Belt:** Flexible power transmission options
- **Easy Maintenance:** Designed for quick and simple maintenance
- **Compact Removable Rotating Assembly:** Streamlined design for easy access

Applications:

- **Sump or Bilge Pump:** Effective for pumping liquids from low-lying areas
- **Mild Corrosives:** Handles mildly corrosive substances with ease
- **Sewage:** Suitable for pumping sewage and wastewater
- **Pulp & Paper:** Ideal for pulp and paper industry applications
- **Wineries:** Used in wineries for pumping liquids
- **Fibrous Materials:** Handles fibrous materials without clogging

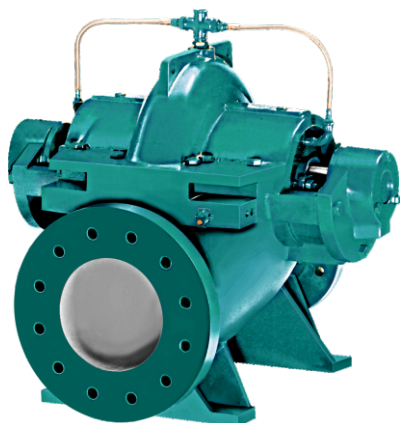
Optional Features/Versions:

- **JSN B:** Utilizes 5 Vane Impeller for specific applications
- **JSN C:** Features Switchback design for unique requirements
- **JSN S:** Redesigned version of the JSN for improved performance
- **JSN U:** More efficient self-primer pump for optimized operation

Note: The product is a pump designed for various industrial applications, offering features like self-priming, non-clogging, and high capacities. It has optional versions and features to suit specific requirements.

JSCP SERIES

HORIZONTAL AXIALLY
SPLIT CASING PUMP



Operating Data:

Capacity	: up to 24,200 gpm (5000 m ³ /hr)
Head	: up to 460ft (140m)
Discharge Size	: 2 inch to 20 inch
Temperature	: up to 212°F (100°C)
Speed	: up to 3500 rpm
Pressure	: 14 bar
M.O.C.	: C.I., C.S., SS-304/304L, SS-316/316L, Bronze, Alloy-20, CD4MCU Hast Alloy B&C, etc.

Applications:

- Water Supply
- Fire-Fighting
- HVAC Application
- High Pressure Boosting System
- Dewatering in Mines
- Cooling Tower
- Recirculation
- Desalination
- Industrial Utility Water Application
- Paper Plant
- Petroleum Refineries
- Sugar Plant
- Steel Plant
- Power Plant
- Irrigation

JMF SERIES

MIXED FLOW PUMP



Operating Data:

Capacity	: up to 30,820 gpm (7000 m ³ /hr)
Head	: up to 90 ft (30 m)
Delivery Size	: 8 inch to 26 inch
Temperature	: 5°C to 140°C (41°F to 284°F)

Key Features:

Low Head, High Capacity: Efficient pumping for large volumes of water
Semi-Open/Open Type Mixed Flow Impeller: Optimized for high-capacity applications

Oil Lubricated Ball Bearings: Reliable and durable operation

Thrust Bearing: Supports axial loads for smooth operation

Gland Packed/Mechanical Seal: Leak-free operation

50HZ/60HZ Availability: Suitable for various power frequencies

Horizontal/Vertical Delivery Options: Flexible installation configurations

Applications:

Air-Conditioning: Cooling water circulation

Drainage: Flood control, stormwater management

Irrigation: Agricultural water supply

Storm Water: Municipal and industrial stormwater management

JPF SERIES

PVDF CENTRIFUGAL
PROCESS PUMP



Operating Data:

Capacity	: up to 4400 gpm (1000 m ³ /hr)
Head	: up to 312 ft (95 m)
Discharge Size	: 1 inch to 6 inch
Temperature	: up to 230°F (110°C)
Speed	: up to 3500 rpm
Pressure	: up to 16 bar
M.O.C.	: PVDF-110°C

Applications:

- Water treatment plant, effluent treatment plant, electro plating, picking & steel rolling mills.
- Excellent for transfer and loading-unloading like HCL, Sulphuric Acid/Alkali, Caustic liquid.
- Scrubbing of corrosive gases like NH₃, CO₂, SO₃, SO₂, L₂, F₂, BR₂, CL₂, etc.
- For handling liquids in various industries like textile, paper, cellulose, sugar, steel, food, having temperature range, materials, etc.
- Ideal for circulation of chemical in metal finishing industry.
- Natural choice for picking line & scrubber in steel plants.
- High capacity transfer pumps, filter press for dyes & chemicals, descaling oil & other fuels.
- Pesticide/insecticide plants, chlorine plants.
- Pharmaceutical and bulk drug plants.

JTF SERIES

TEFLON LINED CENTRIFUGAL
PROCESS PUMP



Operating Data:

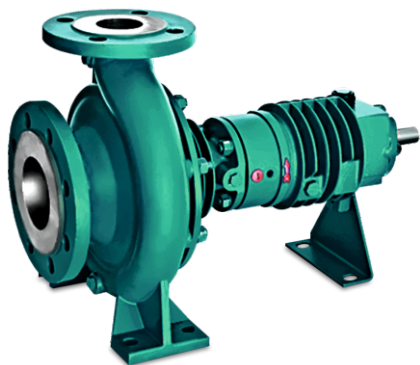
Capacity	: up to 4400 gpm (1000 m ³ /hr)
Head	: up to 312 ft (95 m)
Discharge Size	: 1 inch to 6 inch
Temperature	: up to 392°F (200°C)
Speed	: up to 3500 rpm
Pressure	: up to 16 bar
M.O.C.	: FEP-180°C, PFA-200°C

Applications:

- Water treatment plant, effluent treatment plant, electro plating, picking & steel rolling mills.
- Excellent for transfer and loading-unloading like HCL, Sulphuric Acid/Alkali, Caustic liquid.
- Scrubbing of corrosive gases like NH₃, CO₂, SO₃, SO₂, L₂, F₂, BR₂, CL₂, etc.
- For handling liquids in various industries like textile, paper, cellulose, sugar, steel, food, having temperature range, materials, etc.
- Ideal for circulation of chemical in metal finishing industry.
- Natural choice for picking line & scrubber in steel plants.
- High capacity transfer pumps, filter press for dyes & chemicals, descaling oil & other fuels.
- Pesticide/insecticide plants, chlorine plants.
- Pharmaceutical and bulk drug plants.

JTFP SERIES

CENTRIFUGAL AIR COOLED
HOT OIL PUMP



Operating Data:

Capacity	: up to 800 gpm (180 m ³ /hr)
Head	: up to 260 ft (80 m)
Discharge Size	: 1.25 inch to 3.15 inch
Temperature	: up to 662°F (350°C)
Speed	: up to 3500 rpm
Pressure	: up to 8 bar
Cooling Method	: Air
M.O.C.	: Grey Cast Iron, Cast Steel, Alloy Cast Steel

Features:

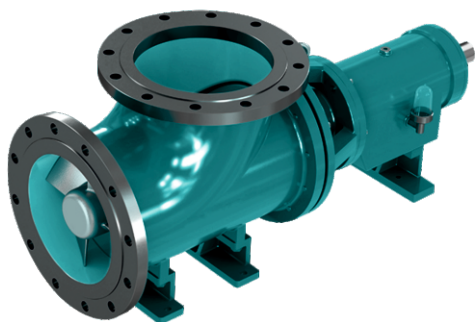
Horizontal, Single Stage, Single Suction, Volute type, Air-Cooled Centrifugal Pumps with Closed Impeller, Pump Shaft is supported by two heavy duty ball bearings, heat resistant mechanical seal, suction flange is on the front and axial, discharge flange is at top and radial.

Applications:

- Petrochemical Industries
- Sugar Industries
- Oil Industries
- Synthetic Fibre Industries
- Textile, Dyeing, Printing Industries
- Paper Making Industries
- Timber Processing Industries
- Plastic and Rubber Industries
- Food Industries
- Construction Industries

JHAF SERIES

CENTRIFUGAL HORIZONTAL
AXIAL PUMP



Operating Data:

Capacity	: up to 61,600 gpm (14,000 m ³ /hr)
Head	: up to 26 ft (8 m)
Discharge Size	: 6 inch to 36 inch
Temperature	: -40°C to 200°C
Speed	: up to 3500 rpm
Pressure	: up to 10 bar
M.O.C.	: C.I., C.S, SS304/SS304L, SS316/SS316L, Alloy-20, CD4MCU, Hastelloy B&C etc.

Advantages:

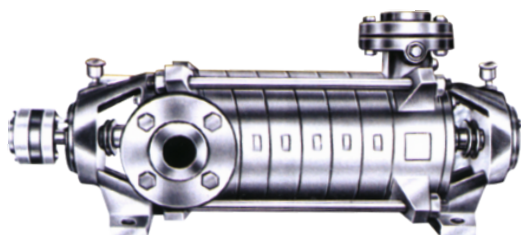
- Heavy duty thick metal section is provided at elbow, stuffing box & impeller for extended wear life.
- Extra large lubrication oil sump provides better heat transfer for reduced oil Temperature. Hence bearing runs cooler and lasts longer.
- High efficiency impeller available in a wide variety of vane angles.

Applications:

- To transfer very large quantity of liquid at low head.
- To raise the water level in irrigation canal.
- Dewatering of large pits/lakes etc.
- To recirculation the liquid in MEE plant.
-

JCBFP SERIES

CENTRIFUGAL HIGH PRESSURE
MULTISTAGE PUMP



Operating Data:

Capacity	: up to 350 gpm (80 m ³ /hr)
Head	: up to 1000 ft (300 m)
Discharge Size	: 1.25 inch to 4 inch
Temperature	: up to 248°F (120°C)
Speed	: up to 3500 rpm
Pressure	: up to 30 bar
M.O.C.	: Cast Iron, Bronze, Steel, etc.

Applications:

- Condensate water transfer
- Fire-fighting system
- Mine dewatering
- Boiler feed
- Reverse Osmosis
- Water supply to high rise buildings
- Sprinkler Irrigation or water supply in hilly area
- Condensate extraction
- Booster plants
- Hot and cooling water circulating
- Power Plant
- High pressure for hydraulic pressure

JMP-M SERIES

SINGLE STAGE HORIZONTAL,
NON-CLOG SELF PRIMING,
MUD/SEWAGE MONOBLOCK PUMPS



Operating Data:

Capacity	: up to 330 gpm (75 m ³ /hr)
Head	: up to 158 ft (48 m)
Suction Head	: up to 16 ft (5 m)
Discharge Size	: 1.5 inch to 3.15 inch
Solid Size	: up to 1 inch
Temperature	: up to 230°F (110°C)
Speed	: up to 3500 rpm
Pressure	: up to 4.7 bar
M.O.C.	: C.I., C.S., SS-304/304L, SS-316/316L, Bronze, Alloy-20, CD4MCU, Hast Alloy B&C, etc.

Applications:

- Dewatering, mud, marine, effluent, oils, spirits, swimming pools, gas oils.
- Vessels, Petroleum Products, Chemicals.
- Civil constructions -dewatering foundations, trenches and pits, Public utilities.
- ETP, STP, Waste water treatment plants, sewage pumping.
- Mobile machinery- cooling water for marine engines and shovels.
- Piers, excavations, pits, pot-holes etc., gram panchayats, municipalities, public health departments, large housing colonies, industries like chemical, pharmaceuticals, food, cement, paper, sugar, salt, steel and others for liquid cargo from freighter, barges.

JSTP SERIES

VERTICAL "IN-LINE" SELF PRIMING
LIQUID RING CENTRIPETAL PUMP



Operating Data:

Capacity	: up to 90 gpm (21 m ³ /hr)
Head	: up to 115 ft (35 m)
Discharge Size	: up to 2.5 inch
Temperature	: up to 302°F (150°C)
Speed	: up to 3500 rpm
Pressure	: 3.5 bar
M.O.C.	: Cast Iron, SS316

Features:

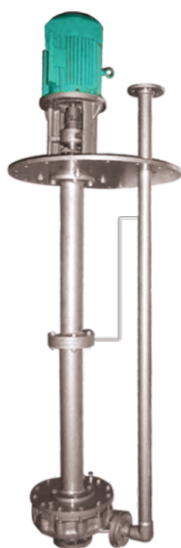
- High head low capacity pump.
- Excellent for handling solvents from barrels and from tank farms to the charging vessels.
- Seal leakage can easily be detected from window in priming chamber.
- Pump can take negative lift from 3 to 5 meters.
- Maintenance is easier, Drain arrangement is standard.
- Compact design - requires less space, No grouting required.
- Note: Since the pump is having close tolerance and always fitted with mechanical seal it is advisable to have a suitable strainer before pump inlet.

Applications:

- Chemicals
- Pharmaceutical
- Solvent transfer handling

JVSP SERIES

VERTICAL LONG SHAFT SUMP PUMP



Operating Data:

Capacity	: up to 1430 gpm (325 m ³ /hr)
Head	: up to 196 ft (60 m)
Discharge Size	: 1 inch to 5 inch
Temperature	: 140°F (60°C)
Pump Length	: up to 13 ft (4 m)
Speed	: up to 3500 rpm
Pressure	: up to 6 bar
M.O.C.	: Grey Cast Iron, Cast Steel, Alloy Cast Steel

Applications:

- Sulphuric acid application, Acid transfer, Chemical processing, Chlor-alkali, General Processing Industry, Light slurries, Organic chemicals, Polymers, Petrochemicals, Slurries, Solvents, Waste Processing.
- Suitable for handling thin, clean or slightly contaminated liquids, such as water, cooling water, effluent, cleaning products, chemicals and hydrocarbons.

JLSP SERIES

HIGH SPEED LIGHT DUTY SEWAGE AND
EFFLUENT SUBMERSIBLE PUMPS



Operating Data:

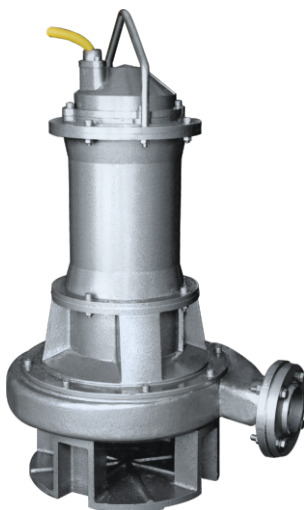
Capacity	: up to 580 gpm (132 m ³ /hr)
Head	: up to 131ft (40m)
Delivery Size	: up to 4inch
Solid Size	: 2 inch
Temperature	: 113°F (45°C)
Speed	: up to 3500rpm
Connection	: DOL
Insulation/Protection	: 'F' Class / IP68
Mechanical Seal	: Bi-Directional Twin Mechanical Seal with various face combinations looking to the application
Additional accessories available : Cutter, Agitator, Auto Coupling, Hose Pipe, Panel	

Applications:

- Muddy water transfer
- Power plants
- Dewatering of ponds, mines, basement of huge building
- Swimming Pool
- Effluent transfer, ETP, STP, Waste water treatment plant
- Used in hotel, hospitals, railways, dairy, chemical industry, sugar, steel, cement, food beverages, etc.

JHSP SERIES

LOW SPEED HEAVY DUTY SEWAGE
AND EFFLUENT SUBMERSIBLE PUMPS



Operating Data:

Capacity	: up to 2200 gpm (500 m ³ /hr)
Head	: up to 148 ft (45 m)
Delivery Size	: up to 8 inch
Solid Size	: 4 inch
Temperature	: 113°F (45°C)
Speed	: up to 3500 rpm
Connection	: DOL, Star Delta, ATS
Insulation/Protection	: 'F' Class/IP68
Mechanical Seal	: Bi-Directional Twin Mechanical Seal with various face combinations looking to the application

Additional accessories available: Cutter, Agitator, Auto Coupling, Hose Pipe, Panel

Applications:

- Muddy water transfer
- Power plants
- Dewatering of ponds, mines, basement of huge building
- Swimming Pool
- Effluent transfer, ETP, STP, Waste water treatment plant
- Used in hotel, hospitals, railways, dairy, chemical industry, sugar, steel, cement, food beverages, etc.

JMBP SERIES

HORIZONTAL CENTRIFUGAL
MONO BLOCK PUMP



Operating Data:

Capacity	: up to 530 gpm (120 m ³ /hr)
Head	: up to 200 ft (60 m)
Discharge Size	: 1 inch to 4 inch
Speed	: up to 3500 rpm
M.O.C.	: C.I., CS, SS304, SS316, Bronze, etc.

Applications:

- Agriculture, farms, civil application
- Industries for clear water handling, cooling tower
- Water supply for domestic use in apartments, building commercial complexes, hotels, swimming pools, automobile service stations, hospitals, hostels.
- Power plant, Fire fighting
- Gardening and Irrigation

JSP SERIES

SELF PRIMING CENTRIPETAL PUMPS



Operating Data:

Capacity	: up to 35 gpm (8 m ³ /hr)
Head	: up to 200 ft (60 m)
Discharge Size	: 1 inch to 1.5 inch
Temperature	: 230°F (110°C)
Speed	: up to 1440 rpm
M.O.C.	: C.I., C.S., SS-304, SS-316, Bronze, Alloy-20, CD4MCU, etc.

Applications:

- Loading and unloading of small and big drums
- Barrels
- Small tankers
- Large use rolling mills for pickling and solvent plant
- Pharmaceuticals
- Laminates

JDP SERIES

AIR OPERATED DOUBLE
DIAPHRAGM PUMP



Operating Data:

Capacity	: up to 198gpm (45 m ³ /hr)
Head	: up to 164 ft (50 m)
Temperature	: up to 2192°F (1200°C)
Material	: Investment Casting CF8M, SS316, Aluminium, PP, PVDF
Particle Size	: up to 0.25 inch
Air Pressure	: up to 7 bar
Air Inlet Size	: 0.25 inch to 0.5 inch
Air Exhaust	: 0.75 inch
Suction	: Dry: 15 ft (4.57 m) and Wet: 25 ft (7.6 m)
Teflon	: Alloy-20, CD4MCU, Hard Alloy B&C, etc.

Applications:

- Solvents, Slurry transfer, Barrels, Acidic Materials, High, Viscous Liquids, Abrasive Media.

JOSP SERIES

SUBMERSIBLE MONO SET PUMP



Operating Data:

Capacity	: up to 1980 gpm (450 m ³ /hr)
Head	: up to 180 ft (55 m)
Delivery Size	: 1 inch to 6 inch
Speed	: up to 3500 rpm
M.O.C.	: C.I., C.S.

Applications:

- Agriculture, farms, civil application
- Industries for clear water handling, cooling tower
- Water supply for domestic use in apartments, building commercial complexes, hotels, swimming pools, automobile service stations, hospitals, hostels.
- Power plant, Fire fighting
- Gardening and Irrigation

JVCP SERIES

VERTICAL INLINE
SINGLE STAGE PUMP



Operating Data:

Capacity	: up to 2775 gpm (630 m ³ /hr)
Head	: up to 272 ft (83 m)
Discharge Size	: up to 10 inch
Liquid Temperature	: up to 176°F (80°C)
Ambient Temperature	: up to 104°F (40°C)
Permissible Pressure	: 160 bar
Sealing	: Mechanical Seal
Power	: 1.1-132 Kw
Speed	: up to 3500 rpm
Protection	: IP55/IP54
Insulation Class	: F/B

Applications:

- Industrial Water Supply
- HVAC System
- Boiler Feed
- Washing Systems
- Cooling Tower

JVI SERIES

VERTICAL INLINE MULTISTAGE PUMP



Operating Data:

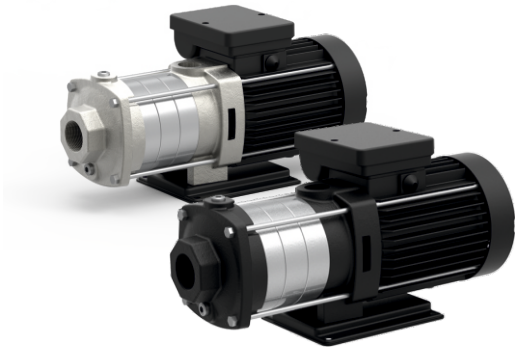
Capacity	: up to 1100 gpm (250 m ³ /hr)
Head	: up to 985 ft (300 m)
Pressure	: up to 30 bar
Liquid Temperature	: up to -15°C to +120°C
Ambient Temperature	: up to 104°F (40°C)
Flange type	: Round Flange, PJE Coupling, Oval Flange
Flange Standard	: DIN
Sealing	: Mechanical Seal
Speed	: up to 3500 rpm
Protection	: IP 55
Insulation Class	: F Class
Duty	: S1 (Continuous)
Power Range	: 0.37-110 kW
Frequency	: 50Hz, 60Hz
M.O.C.	: C.I., SS304, SS316

Applications:

- For thin, non-explosive, not containing solid particles or fibers, noncorrosive liquids are suitable.
- For liquid transfer, circulation and pressure boosting of cold or hot clean water.
- For water supply systems, pressure boosting systems, liquid transfer and irrigation works.

JH SERIES

HORIZONTAL MULTISTAGE PUMP



Operating Data:

Capacity	: up to 125 gpm (28 m ³ /hr)
Head	: up to 215 ft (65 m)
Operating Pressure	: up to 10 bar
Liquid Temperature	: Standard: up to -15°C to +70°C
High Temperature	: up to 219.2°F (104°C)
Ambient Temperature	: up to 122°F (50°C)
Sealing	: Mechanical Seal
Speed	: up to 3500 rpm
Protection	: IP 55
Insulation Class	: F Class
Duty	: S1 (Continuous)
Power Range	: 0.37-4 kW
Frequency	: 50Hz, 60Hz
M.O.C.	: C.I., SS304, SS316

Applications:

- The pump shall be designed for liquids which are non-aggressive and non-explosive, without solids or fibres
- Liquid transfer and circulation of liquids within light industry and farming
- Pressure boosting in single-pump and multi pump booster systems
- Domestic water supply
- Cooling systems
- Air-conditioning systems
- Washing and cleaning systems
- Water treatment

JPS SERIES

PRESSURE BOOSTER SYSTEM



Operating Data:

Capacity	: up to 70 gpm (16 m ³ /hr)
Head	: up to 197 ft (60 m)
Temperature	: up to 104°F (40°C)
Speed	: up to 3500 rpm
Pressure	: up to 10 bar
M.O.C.	: C.I., SS304, SS316

Features:

- Compact design
- Easy to Install and operate
- Reduce energy consumption
- Maintains constant pressure
- Adjustable output pressure settings
- Digital display to monitor the pump speed, pressure, etc.
- Protect from Dry run, over load, unbalanced Voltage, short circuit, etc.

Applications:

- Domestic Water supply are pressure boosting
- Small buildings
- Villas
- Schools
- Garden, etc.

HYPN SERIES

PRESSURE BOOSTING
HYDRO-PNEUMATIC SYSTEM



Operating Data:

Capacity	: up to (1200 m ³ /hr)
Head	: up to 300 m
Temperature	: up to 158°F (70°C)
Speed	: up to 3500 rpm
Pressure	: up to 10 bar
M.O.C.	: C.I., SS304, SS316

Applications:

- Constant Pressure of Water Supply for Hotels
- Apartments
- Commercial Buildings
- Industries
- Agriculture
- Other large Multi-storey Buildings

Pumped Liquids:

- Clean
- Non-aggressive
- Non-explosive
- Thin
- Clear Water without Abrasives
- Solid Particles are Fibre

SOLAR PUMP



Operating Data:

Capacity	: up to 100gpm (540 m ³ /day)
Head	: up to 1520 ft (463 m)
Power Range	: 0.37 kW to 15 kW

Operating Conditions:

Ambient Temperature	: 122°F (50°C)
Liquid Temperature	: 32°F to 176°F (0°C to 80°C)
Water pH	: 6.5-8
Sand Content	: 25 g/m ³

Features & Benefits:

- Highly energy efficient submersible solar water pump with energy efficient inverter duty motor.
- High efficiency solar photovoltaic panels with a service life of minimum 20 years.
- Robust design Galvanized steel mounting structure for long life.
- High technology automatic controller with dynamic MPPT (maximum power point tracking) control method.
- The controller offers complete protection against under and over voltage and dry run protection for the pump.
- Highly efficient controller with a conversion efficiency of 98%.
- The controller is tropicalized to operate satisfactorily with an ambient temperature of up to 50°C.
- Virtually no maintenance cost.
- Environmentally friendly air and noise pollution free solution.

Applications:

- Flood irrigation of small fields.
- Drip irrigation for farms.
- Cattle watering.
- Water supply for small villages, schools, hospitals and homes.

JEE PUMPS FACILITIES

STORE



With its inventory management service, JEE provides recommendations for maintaining optimum spare parts stocks and preventing excess stocks or shortages of spare parts. Easy to order and available at short notice

DRAWING DEPARTMENT



Drawing Department is a pivot of our company. We use specialised software to design product and parts. Our technical drawing has all the information for manufacturing a part or welding and building an assembly. The info includes dimensions, part names and numbers etc. So once a manufacturing engineer gets the drawing, they can start the production process without a second thought.

CNC DEPARTMENT



We have CNC (Computer Numerical Control) in-house for automating control of machine tools through the use of software embedded in microcomputer attached to the tool.

MACHINING DEPARTMENT



We have hi-tech machinery for manufacturing parts and professional and skilled operators of machines for giving best outcome of our products.

ASSEMBLY DEPARTMENT



We have comprised of professional assembler, engineer and technicians, who specialise in all the work process, including reading, drawings, understanding the assembly process and executing the actual assembly.

Q.C. DEPARTMENT



Our quality inspectors monitors the quality of incoming and out going products or materials for a company. They are tasked with conducting tests, analysing measurements, and overseeing production process. maintains, test and troubleshoot all instrumentation devices. They create an effective, efficient testing protocol to be used across all product lines.

FOUNDRY DEPARTMENT



"IN HOUSE AUTOMATIC CASTING PLANT"

JEE Pumps Limited. is having a in house casting facilities adjusted to their pump manufacture facilities spread over 2500 Sq. Mts. with following.

- Production & Quality check equipment.
- Induction Furnace of 150 Kg & 300 Kg.
- Single Piece casting from 500 Gram to 600 Kg Capacity
- Automated Sand Mixing Plan, Sand Muller, Automated core making machine & Shot Blasting Machine
- Material Handling by 3 Nos. of over head crane of 5 tons capacity each & various size of scissor lifts

MOULDING PROCESS

- Hand Moulding
- Machine Moulding
- Moulding process through molasses sand, Green sand & No bake Sand
- Co2 Moulding & Shell Moulding

QUALITY CONTROL EQUIPMENT

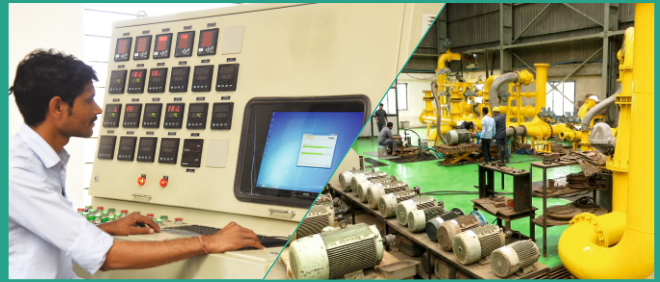
- Temperature Control Pyrometer
- Optical emission Spectrometer
- Electric Heat Treatment Furnace

FINISHING DEPARTMENT



We have a professional finishing supervisor and finishing workers that supervises all production activities (modification, packaging, branding, painting) in the finishing department, thereby ensuring that the goods reach the final consumer in a wholesome manner.

TESTING DEPARTMENT



TESTING FACILITIES AT JEE PUMPS

Due to rising cost of energy running cost of pumps and breakdown cost of plant. It is essential to ensure the accurate performance of pump prior to despatch. A pump is a very important equipment in any process Plant. And if pump fails to perform as desired, will result in costly production loss as well as high energy consumption. To avoid such trouble to our valued customer & to perform our pumps accurately at site. we at our Kubadthal Plant built a world class test bed with following facilities.

Where pump performance can be tested as per various Indian and International Standard. All the instruments used for power, flow & head measurement, vibration & sound level check are calibrated with NABL accredited laboratories with traceability.


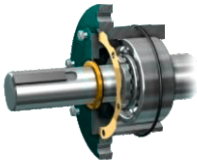
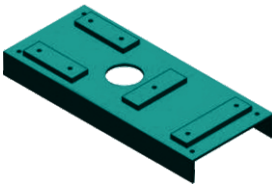









TEST FACILITY

The facility is equipped with latest electronic instruments for measurement of

- **Flow:** Mag flow meters
- **Head:** Pressure Transmitters,
- **Power:** Digital power meters
- **Speed:** Opto-electronic Tachometers
- **Sound & Vibration:** Sound & Vibration meter with FFT analyser in application,
- **Temperature:** RTDs



PUMP ACCESSORIES

			
Casing	Bearing Assembly	Base Frames	Shaft Kit
			
Mechanical Seal's API Plan	Cartridge Seal	Impellers	Stuffing Box Covers
			
Mechanical Seal	Coupling	Motors	Sleeves

CLIENTELE



JEE PUMPS INC

CLIENT DETAILS

Company Name _____ Date: _____

Address _____

Type of Industries _____

Contact Person Name & Designation _____ Contact No.: _____

E mail _____

DETAILS FOR PUMP SELECTION

PUMP TYPE: ☐ Horizontal ☐ Vertical ☐ Submersible ☐ Self-Priming

PUMP APPLICATION:

☐ Thermic Fluid ☐ Process ☐ ETP ☐ Filtration
☐ Transfer ☐ Loading ☐ Unloading ☐ STP ☐ Others

PUMPING FLUID / LIQUID NAME: _____

Duty: ☐ Continuous ☐ Intermittent

PRESENCE OF SOLIDS / FOREIGN PARTICLES: ☐ Yes ☐ No

Solid Size: _____ Specific Gravity: _____

Viscosity: _____ Temperature: _____ pH Value: _____

PUMP PERFORMANCE:

Discharge Capacity in M³/hr. or LPM: _____ Delivery Head / Differential head in Meters: _____

Suction Head in Meters: _____ Discharge Pressure in Kg/cm²: _____

MOC: ☐ Stainless Steel (S.S.) ☐ Cast Iron (C.I.) ☐ Other _____

SHAFT SEALING: ☐ Gland Type ☐ Mechanical Seal Type

PRIME MOVER: Motor / Engine: _____ KW/HP: _____

Phase : _____ Volts: _____ Hz: _____ RPM: _____

Base Plate, Coupling Guard: ☐ Yes ☐ No

ANY OTHER INFORMATION:



JEE Pumps Facility

Our industrial pumps are supported by a world-class testing facility and uncompromising quality assurance procedures, setting us apart from other manufacturers. Our testing facility adheres to the Hydraulic Institute's pump test standard procedures, ensuring automated performance with fully automated test beds.

State-of-the-Art Infrastructure

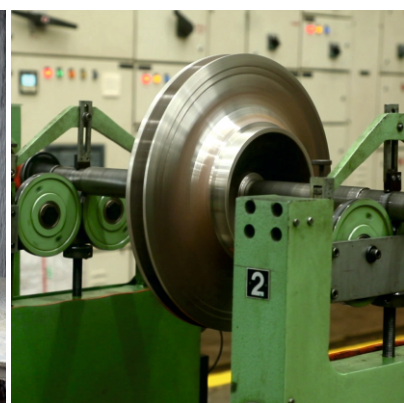
- In-house Foundry Facility: Ensures better casting and timely delivery
- Dynamic Balancer: Meets ISO 1940-1 Grade 6.3 or 2.5 standards
- Hydraulic Test Bench: Simulates real-world conditions for precise testing
- Power Frame Assembly Room & Seal Fitment Facility: Streamlines assembly and seal fitment processes
- Paint Booth: Provides a controlled environment for high-quality painting
- Base Mount Fabrication Center: Fabricates base mounts with precision

- VMC & CNC Machine Shop: Equipped with advanced machining capabilities
- In-house Moulding Machines: Enables efficient production of non-metallic pumps

Technical Expertise

With a legacy built on industry experience and a proven track record, JEE Pumps stands as a formidable competitor in the marketplace. Our technical expertise is rooted in:

- Unmatched Application Knowledge: In-depth understanding of diverse industrial applications.
- Technical Capabilities: Skilled engineers and technicians with extensive expertise.
- World-Class Testing Facility: State-of-the-art infrastructure for rigorous testing and validation.
- Quality Procedures: Stringent quality control measures ensuring exceptional product reliability.
- Our technical expertise generates confidence in our products, empowering customers to trust JEE Pumps for their pumping solutions.





EXPORT



JEE PUMPS INC



+1 (604) 704-3537



info@jeepumps.ca
www.jeepumps.ca



JEE PUMPS INC

9835 King George Blvd, Surrey,
BC V3T 5H6, Canada

